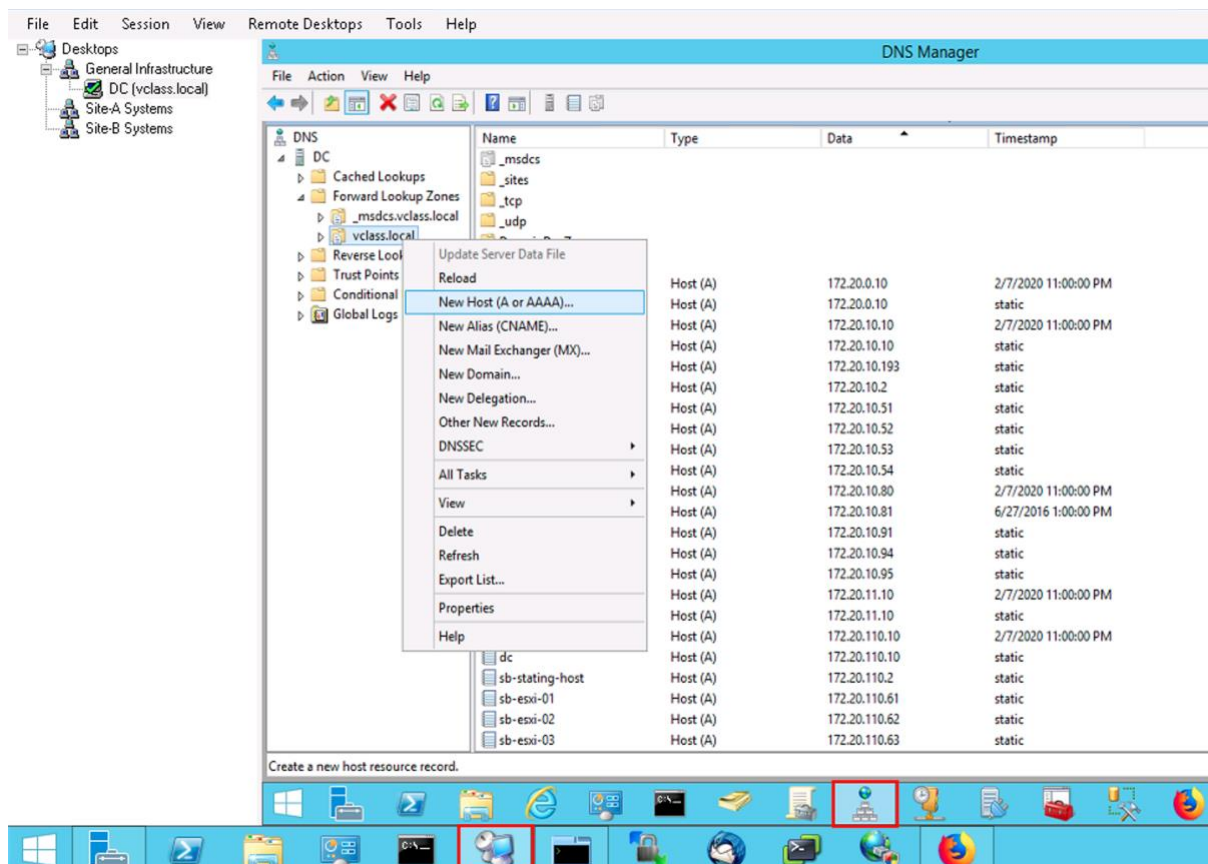
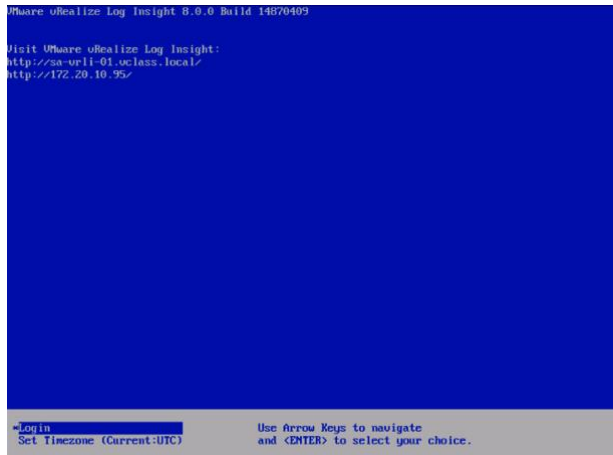


Installing vRealize Log Insight

1. First download the vRealize Log Insight OVA file into your lab environment. (**Use FireFox**)
2. Deploy the appliance via the vSphere Client. Right click the Management-Edge cluster and choose **Deploy OVF Template**.
Choose the downloaded OVA from step 1.
Use these directions in the wizard, **for the rest accept the defaults**:
 - Virtual Machine name: **sa-vrli-01.vclass.local**
 - Appliance size: **Extra Small**
 - Place the appliance on the shared datastore with the most free space and choose **Thin Provisioning**
 - Connect the appliance to the **pg-SA Management** port group
 - password: **VMware1!**
 - Hostname: **sa-vrli-01.vclass.local**
 - Default Gateway: **172.20.10.10**
 - domain name and domain search path: **vclass.local**
 - DNS Server: **172.20.10.10**
 - IP address: **172.20.10.97**
 - Netmask **255.255.255.0**
3. While the appliance is deploying perform the next step, **do not yet power on the vm**.
4. On the domain controller add sa-vrli-01 to the vclass domain with address 172.20.10.97. Access the domain controller via RDP in the RDP Manager in the task bar.

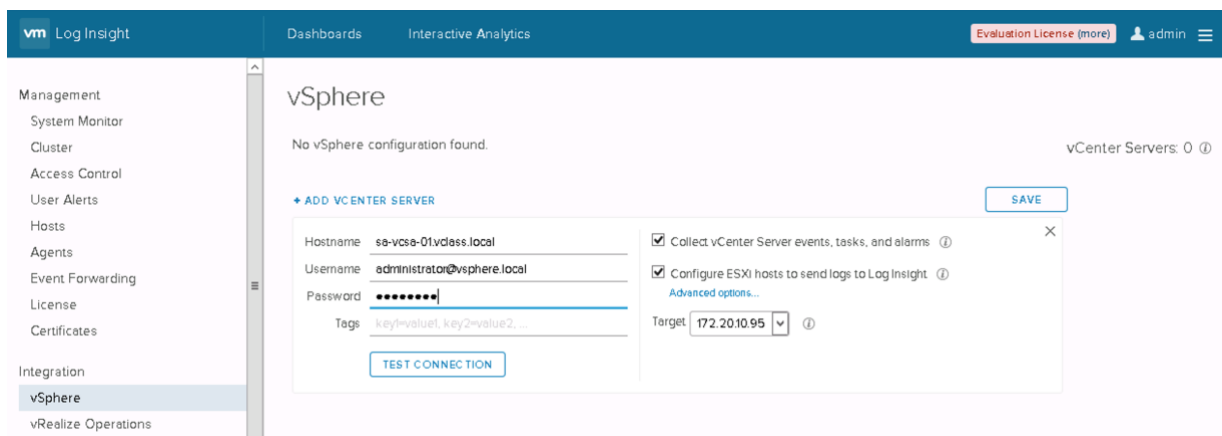


- When the OVF deployment is done create a snapshot named *pre-first-boot* and power on the vm. (We create a snapshot before powering on the vm for when the initial setup fails at first boot.)
- Wait for the initial configuration to be complete. This can take up to 15 minutes. When it's done the virtual machine console will show this screen:



- Open a browser and access <https://sa-vrli-01.vclass.local>. This will open the wizard, start a new deployment. Use these directions in the wizard, for the rest use the defaults or leave the fields blank:
 - admin email address: not required, leave blank
 - admin password: **VMware1!**
 - For this lab environment do not join the Customer Experience Improvement Program
 - Sync server time with ESXi host, do not use NTP
 - skip the SMTP configuration
 - skip the SSL configuration
- After the wizard is done select **Configure vSphere Integration**. This will configure vCenter and your ESXi hosts to send their log entries to vRealize Log Insight.
 - vCenter Server Hostname: sa-vcsa-01.vclass.local
 - vCenter Server User name: administrator@vsphere.local
 - vCenter Server Password: VMware1!

Test the connection before continuing. When the test is successful click **Save**.



After the vCenter and Hosts configuration is done your environment is ready.

